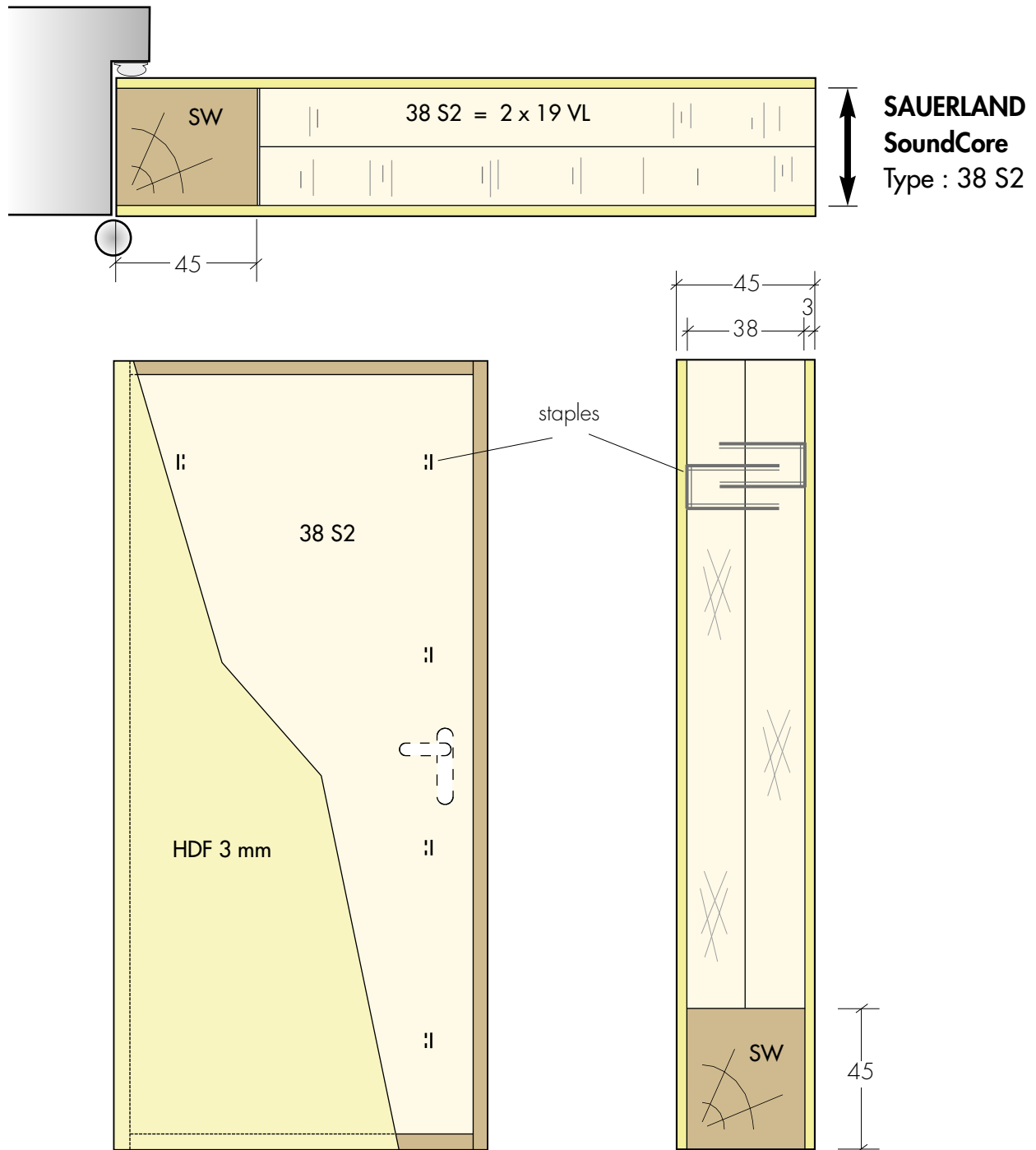


Construction Examples - 45 mm Door

30' Fire and 37 dB Sound Door



Construction :

- Core: **SoundCore 38 S2**
2 x 19 VL
- Stile/ rails softwood 'SW'
- Door skin: HDF 3 mm

Results :

- Weight approx. 28,7 kg/m²
- Stability heavy duty
- Fire 30 min
- Sound 37 dB